

February 2011

# NFCPM Gazette



North Florida Society of Certified Public Managers

## Inside this issue:

February Speaker—Jane Marks	2
Calling All Beanie Babies!	2
Help Needed for March Meeting	2
Recognizing NFCPM Members	3

## This month...

### Monthly Luncheon Meeting

Tuesday, February 8

11:30 am - 1:00 pm

Amtrak Station

RSVP to

[NorthFloridaCPM@gmail.com](mailto:NorthFloridaCPM@gmail.com) by

Friday, February 4

Bring Beanie Babies, Webkinz, and Trolls for Operation Gratitude contribution

## Reflections from the President

Sabrina Hartley, Chapter President

The January NFCPM meeting provided an interesting contrast. On the one hand, we had to take care of some business and discuss where the chapter is and where it is going. On the other hand, people really wanted to discuss what's going on with them.

While I talked about the member survey results and their implications for the chapter's future and things like updating the annual chapter goals and objectives, people listened politely; even nodding in agreement and affirmation at appropriate points. I dutifully covered the chapter's role in relation to the Florida Society of Certified Public Managers (FSCPM) as well as whom on our board also serves on the FSCPM board – (that would be me, who serves as a state member-at-large, and Pam King, VP, who will begin representing the chapter in 2011). Again, people paid polite attention. I briefly mentioned my upcoming trip to the Annual Symposium and resulting responsibility to report back to the chapter. People were clearly less interested in

this information, but still somewhat attentive. Finally, I presented

some member awards to several people who did some great stuff for the chapter in 2010. Attendees generally perked-up a bit at this personal exchange.

To wrap-up the meeting, we were supposed to have a networking exercise designed by our fabulous VP, Pam King. Unfortunately, since Pam had to briefly leave the meeting to attend to a pressing matter, I reneged on the deal and decided to do a general discussion/networking session instead of the cool exercise that Pam had planned. (They always seem cool when Pam does them but sort of dorky when I do them....maybe it's me?!\*) Anyway, it was clear that this is what the crowd came for. Once the floor was opened, conversation really flowed. In general, people introduced themselves and where they worked and provided a little bit of information about their workplace and current conditions. Of course we know that we're all experiencing some of the same workplace stresses and situations, but it sure seemed comforting to hear others talking about it.

This contrast and conversation makes the chapter's 2011 role even clearer. It's obvious

that we need to keep our focus on participative meetings and events that allow for more member sharing. Of course, you told us that by requesting more member networking opportunities. Well, we heard you, and have already started that ball rolling. If you weren't able to make the January meeting, know that you won't have to sit through chapter business details in subsequent meetings; perhaps some general business updates or discussion but no details. Know too that we will work to balance our get-to-know-you activities with participative presentations/discussions and networking opportunities. It's important to note, however, that networking can mean different things to different people. We will certainly do our best to try and implement activities that address multiple networking angles/needs. If, however, you have a particular networking goal in mind or a format that you know works, please let us know. Help us meet our goal of meeting members' needs. In the meantime, I hope to see you at next month's meeting where we will continue to host networking opportunities for everyone to get to know each other a little better.



## February Speaker—Ms. Jane Marks

Pam King, Vice President

We are pleased to announce as our presenter for the February meeting Jane A. Marks, M.A., LMFT, LMHC. She will be providing a presentation on managing stress in our lives. In today's uncertain times, she will help us find methods that can be used to reduce the effects of stress on our health and relationships both personally and professionally.

Ms. Marks has been a practicing psychotherapist in the Tallahassee area for the past 35 years. She received her Bachelor of Science degree in Psychology

from Florida State University in 1969. She graduated Magna Cum Laude with a Masters Degree in Counseling Psychology from Chapman University. Ms. Marks is a bi-weekly consultant on the WTXL Channel 27 Morning News on teen mental health issues. She is a member of numerous charitable organizations and sits as a member of various boards of directors including Florida State University's Friends of Dance as well as Girls and Boys Town, San Luis Mission Foundation board, and the Tallahassee Memorial Foundation. Jane

has volunteered her time over the last twenty years to promote WFSU Public Radio and WFSU Public Television during their annual membership drives. She is active with the American Cancer Society and the American Heart Association. Ms. Marks has received many awards including "Family Therapist of the Year," the NAACP Image Award and the Kids Incorporated Champion for Children award. She was most recently honored as the Woman of the Year for the 2007 Women of Distinction Awards.



## Calling All Beanie Babies!

Paula Kiger, Community Service Committee Co-Chair

Our Chapter will be collecting new and used Beanie Babies, Webkinz, and Trolls for Operation Gratitude. These small stuffed animals are among the most sought-after items needed by our troops in the middle east. The soldiers use them to build rapport with children in the areas where the troops are stationed. In exchange,

the children give the soldiers information regarding the location of potentially fatal IED's (improved explosive devices). Please bring your contributions to the February meeting!

If you would like more information about Operation Gratitude, please visit [www.operationgratitude.org](http://www.operationgratitude.org).



**Help our Troops overseas by bringing Beanie Babies, Webkinz, and Trolls to our February meeting!**



## Help is Needed in Preparing for the March Chapter Meeting... Dottie Gough

Mark your calendars and plan to attend the March 8 Chapter meeting. Dottie Gough will facilitate a training session on Conflict Management. For this session to be successful, Dottie is asking chapter members to provide situational examples of workplace conflicts by no later than **Friday, February 18**. Please send examples to Dottie at [dottie-gough@embarqmail.com](mailto:dottie-gough@embarqmail.com). Examples can be submitted anonymously. Your help will be greatly appreciated.



## North Florida Chapter Members Recognized at the 21st FSCPM Annual Symposium and Awards Luncheon

Dottie Gough

Several chapter members were recognized with awards at the 21st FSCPM Annual Symposium. These include:

**Sabrina Hartley** received the following awards:

**CPM of the Year** - This is the highest honor given by the FSCPM and is presented to a Florida CPM who has made the greatest contribution to the FSCPM within the last year.

**President's Award** - This award is a special award given by the President of the FSCPM and Sabrina was one of three people recognized by President Fred Levinson.

**Exceptional Leadership** - This is given to managers and leaders who provide outstanding leadership within the organization at both the state and chapter levels.

**Excellence in Professional Development and Continuing Education** - This is a new FSCPM award that was given to individuals who actively contributed to the professional development and continuing education of CPMs.



**Pamela King and Kim VelDink** each received the **Outstanding Contribution Award**. This award is given for commitment, dedication and exceptional service to FSCPM.

**Paula Kiger** received the **Extra Mile Award** which is given for willingness and strength of character to go above and beyond expectations to ensure the success of the FSCPM.

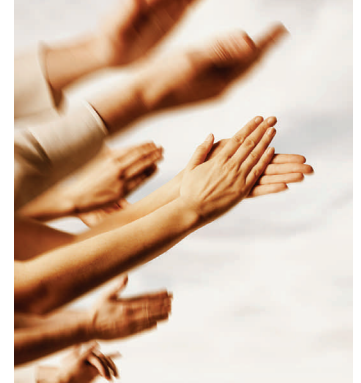
**Dottie Gough** received the **Sustaining Member Award** for her 20 years of continuous and sustained service to the North Florida Chapter and the FSCPM.

In addition, **the chapter** again received the **Chapter Effectiveness Award** for meeting all of the mandatory and optional requirements. The chapter has been recognized with this award since its inception in the mid 1990's.

**Certificates of Appreciation** were presented at the January chapter meeting to the following individuals:

- Pamela King**
- Helen Jackson**
- Amy Carraway**
- Gary Eggebraten**
- Travis Knight**
- Diane Gomez**
- Sherry Valdez**
- Dennise Parker**
- Sabrina Hartley**
- Kim VelDink**
- Shelanda Shaw**

Congratulations to each person who was recognized and thanks so much for your great service. You are all assets to the chapter and the FSCPM.



**Thank you to those who put in their time to keep the chapter going, improve it, and are all-around wonderful CPMs!**

### Committee Chairs

- Paula Kiger, *Co-Chair*, Community Service
- Sherry Valdez, *Co-Chair*, Community Service
- Amy Carraway, *Chair*, Communication
- Cheryl Graham, *Chair*, Fund Raising
- Pamela King, *Chair*, Program
- Kim Vel Dink, *Chair*, Level VIII Graduation
- Dottie Gough, *Chair*, Chapter Effectiveness
- Phil Barnett, *Chapter Photographer*



## North Florida Society of Certified Public Managers

### Mission Statement

To foster and maintain high professional and ethical standards in the practice of public management, and to further the professional growth of the Society's members.

### Chapter Officers

- Sabrina Hartley, *President*
- Pamela King, *Vice President*
- Travis Knight, *Treasurer*
- Anna Bethea, *Secretary*
- Dottie Gough, *Lifetime Member*

 [Visit us on Facebook!](#)

On the web...  
[www.fscpm.org/north/](http://www.fscpm.org/north/)